

POLISHER TD

The polisher improves the appearance of fresh vegetables, by removing dirt, debris and blemishes from the vegetable's surface, resulting in a more premium appearance prior to packing.



General description

The Polisher improves the appearance of fresh vegetables, by removing dirt, debris, and blemishes from the vegetable's surface, resulting in a more premium appearance prior to packing.

This polisher TD type has a rotating drum made up of a row of nylon brushes. The produce enters the polisher via an infeed chute and is dropped into a rotating drum with rotating brushes. While the produce is moving towards the outfeed, these brushes polish the produce. Two water pipes spray fresh and/or recycled water on the produce as it travels through the drum. Produce is washed/polished as it rubs against other produce as well as the rotating brushes.

On demand, the polisher TD type can be made of mild steel or stainless steel. In mild steel, frame is made from painted mild steel. Doors, infeed, outfeeds, and covers are made from stainless steel. The bearings and drive/idle rollers are from mild steel. The drum, drum spacers, brush shafts, and motor bridge are from galvanized steel. In stainless steel, frame, doors, infeed, outfeed, and covers are made from stainless steel. The bearings and drive/idle rollers are from mild steel. The drum, drum spacers, brush shafts, and motor bridge are from galvanized steel. In the polisher TD type, the flow of produce is controlled by a drum valve, which can be operated manually or electronically as per client demand. Various brush hardness and colors are available to choose from depending on different crops to provide effective resulting polishing.

Depending on the client's requirements and the availability of water, the polisher can be equipped with a water gutter or recirculation tank on the bottom. On demand, over recirculation tank filter belt can be integrated to remove solid and organic waste.

On demand, with a recirculation tank water management can be manual or automatic with manual/automatic inlet and outlet valve and water level meter. The height of the subframe can vary from 0-5 meters.

All dimensions in cm

		TD 250-12	TD 300-14	TD 350-18
A	Length of the drum	250	300	350
B	Amount of roller	12	14	18

All capacities are indications based on experience from the past and depend on the agro climatic, soil and logistic conditions of the product, Allround VP does not guarantee any of these.

Characteristics

- ✓ Strong and robust construction
- ✓ Control of the polishing intensity with separate variable speed controls for the brush and drum rotations
- ✓ Highly reliable V-belt and synchronous belt drive systems
- ✓ Range of water recycling systems to minimize water consumption rates
- ✓ Fresh water and recycled water spray bars inside the drum
- ✓ Manual or automated out-feed gate to control produce depth
- ✓ Water management can be done manually or automatically with inlet/outlet valves and level meters

Options:

■ Material and treatment (frame)

Painted mild steel	Frame is made from painted mild steel. Doors, infeed, outfeed and covers are made from stainless steel AISI304. The bearings and drive/idle rollers are from mild steel. The drum, drum spacers, brush shafts and motor bridge are from galvanized steel
Stainless steel	Frame, doors, infeed, outfeed and covers are made from stainless steel AISI304. The bearings and drive/idle rollers are from mild steel. The drum, drum spacers, brush shafts and motor bridge are from galvanized steel

■ Brush hardness (in mm)

0.2	Black
0.25	Yellow
0.3	Red
0.35	Grey
0.4	Green
0.45	Blue
0.7	Black
1.2	White

■ Electrical control

No electric	Motors and necessary sensors
Stand-alone	Motors, necessary sensors and control panel with HMI. The length of the cable is 5, 10, 15 or 20 meter
Central control in line	Motors and necessary sensors


Options:
■ Material and treatment (electrical panel)

Painted mild steel The electrical panel is made from painted mild steel

Stainless steel The electrical panel is made from stainless steel AISI304

■ Support (electrical panel)

Mounted on machine The electrical panel is mounted on the machine

Mounted on wall The electrical panel is mounted on the wall. The length of the cable between the machine and the electrical panel is 5, 10, 15 or 20 meter

Subframe The electrical panel is mounted on a subframe. The length of the cable between the machine and the electrical panel is 5, 10, 15 or 20 meter

■ Material and treatment (subframe)

Painted mild steel It is made from painted mild steel

Stainless steel It is made from stainless steel AISI304

Galvanized steel It is made from galvanized steel

■ Height of subframe

0 to 5 meter

■ Tank

Recirculation tank A tank is included which receives the used water from the polisher

■ Water gutter

Gutter A water gutter is included

■ Water management

Manual The valves can be operated manually

Automatic The valves are operated automatically, except the outfeed valves

■ Valve fresh water

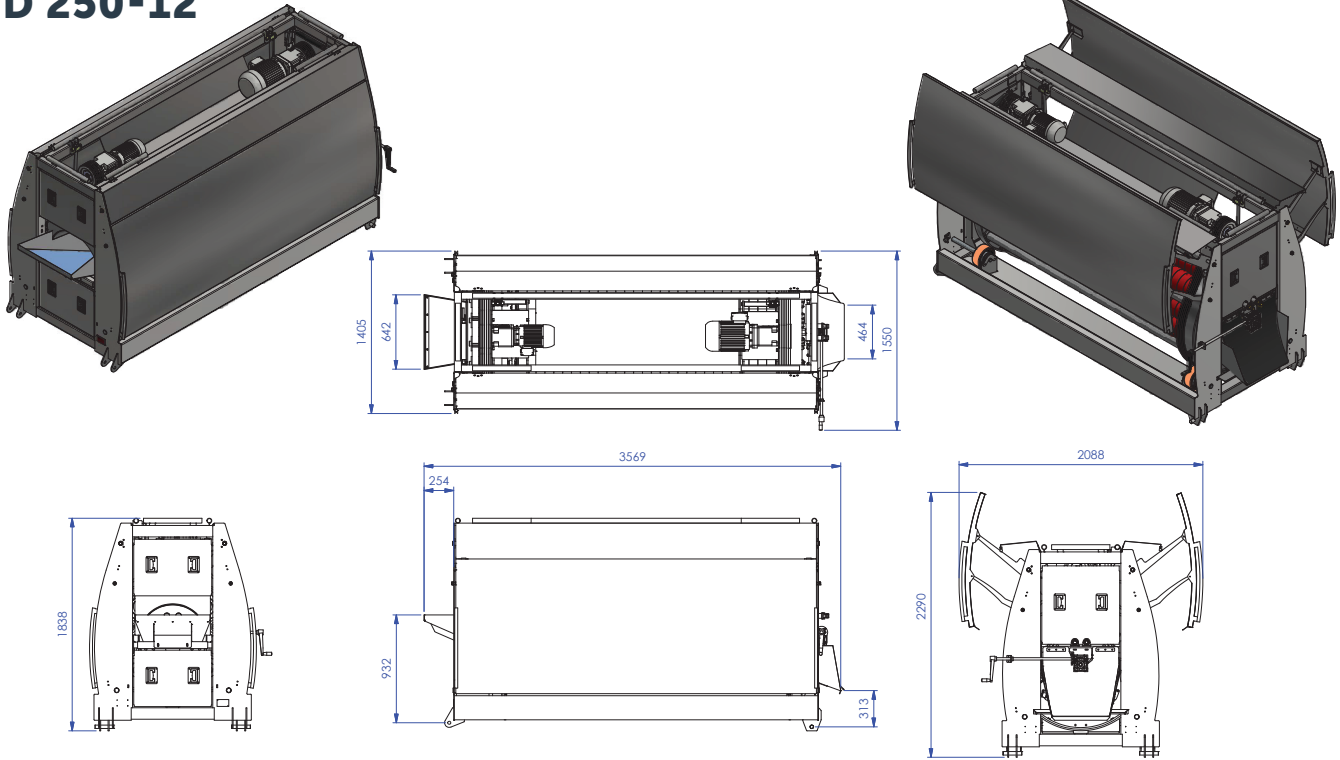
No valve There is no valve included to the fresh water pipe

Manual Valve to the fresh water pipe can be operated manually

Automatic Valve to the fresh water pipe can be operated automatically



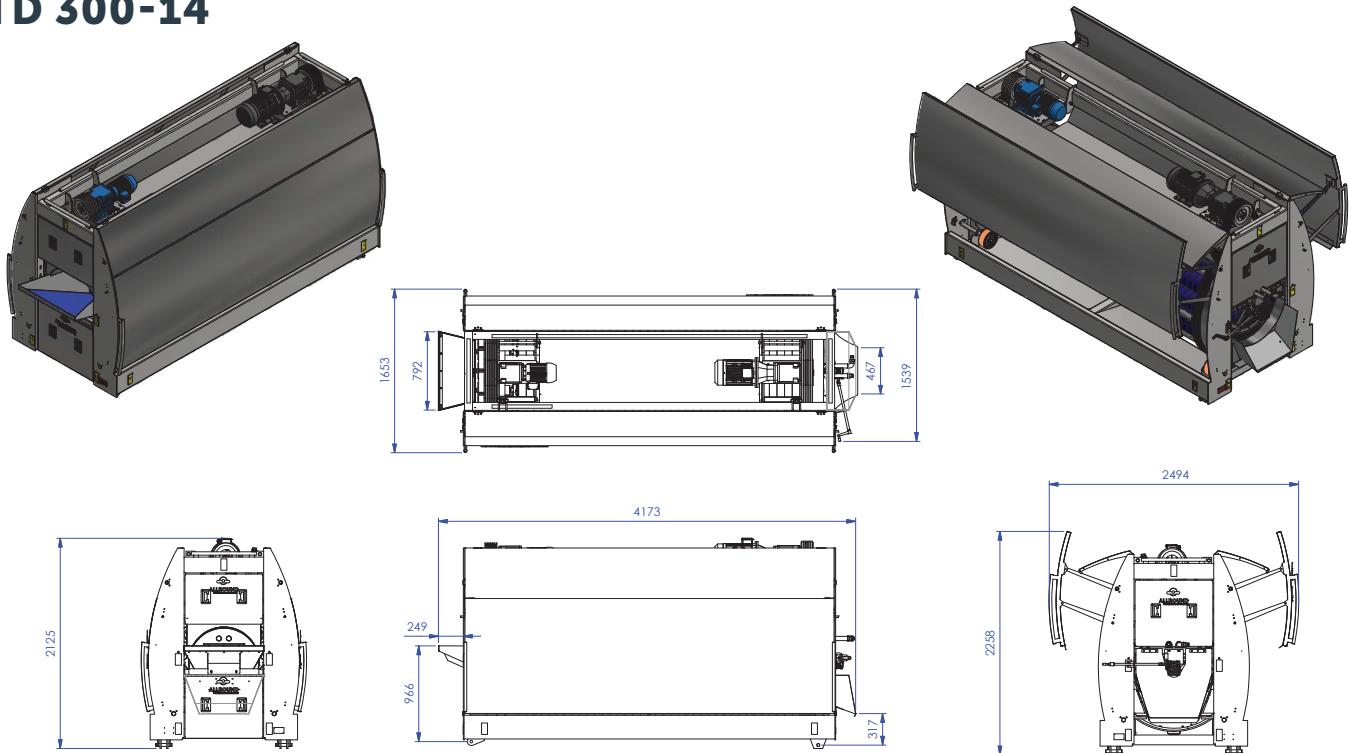
TD 250-12



For discussion only!
 The dimensions are approximately.
 We are free to resize and change the machines,
 when we deem it necessary.

For principle: ISO 8015	General tolerances: ISO 20748	Fit system: ISO 286	Geometrical tolerancing: ISO 1101
Project: Polisher - -			
Description: TD 250-12			
Surface:			
ALLROUND VEGETABLE PROCESSING	Engineer: EJC8	Scale: 1:30	00037889
Date: 25-1-2021	Sheet size: A3	Unit: mm	Revision: 01
Sheet: 1 of 3			

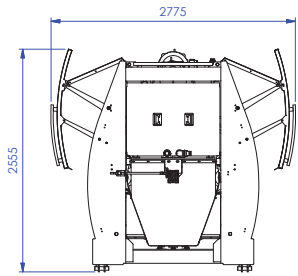
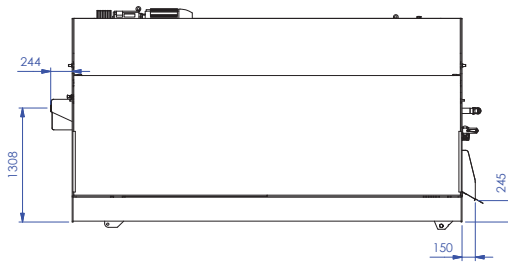
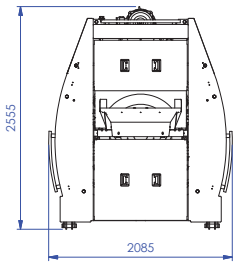
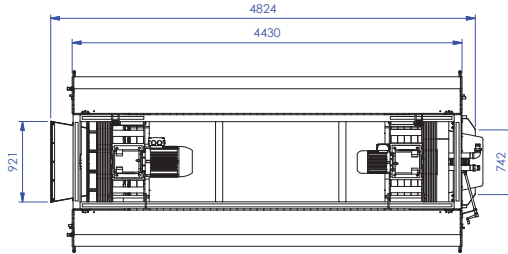
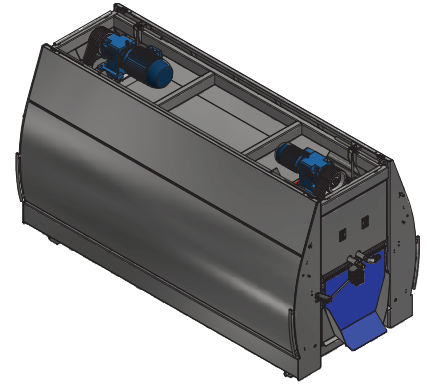
TD 300-14



For discussion only!
 The dimensions are approximately.
 We are free to resize and change the machines,
 when we deem it necessary.

For principle: ISO 8015	General tolerances: ISO 20748	Fit system: ISO 286	Geometrical tolerancing: ISO 1101
Project: Polisher - -			
Description: TD 300-14			
Surface:			
ALLROUND VEGETABLE PROCESSING	Engineer: EJC8	Scale: 1:35	00005383
Date: 25-1-2021	Sheet size: A3	Unit: mm	Revision: 02
Sheet: 1 of 3			

TD 350-18



Tol principle: ISO 8015		General tolerances: ISO 20768		Fit system: ISO 286		Geometrical tolerancing: ISO 1101	
Project: Polisher - -							
Description: TD 350-18							
Surface: - - -							
		Engineer: SRPL	Scale: 1 : 40	00055667		Revision:	
		Date: 17-11-2020	Sheet size: A3	Unit: mm		Sheet: 1 of 7	
						01	